

**CITY BOARD
20 JUNE 2013**

ITEM B6

EQUALITIES PERFORMANCE MONITORING INFORMATION

Report of the Acting Chief Executive

1. SUMMARY

This end of year Equalities report presents a demographic picture of Derby City and equalities performance information for 2012 / 13 compared to previous years.

2. RECOMMENDATION

The City Board notes the detail and actions taken to date.

3. MATTER FOR CONSIDERATION

- 3.1 This report provides equalities information and statistics for the 2012/2013 in relation to various service areas.

Key points for noting:

- 3.2 **Disability**
Currently 28.6 % of all lead tenants consider themselves to be disabled. This is a reduction from 2011 / 2012 when 30% of all lead tenants considered themselves disabled.
- 3.3 **Ethnicity**
Information from the census has provided a current resident profile of Derby 75% non-minority ethnic and 25% minority ethnic. Derby Homes profile is 73% non-minority ethnic residents, 16% minority ethnic residents and 11% of our residents have not declared their ethnicity.
- 3.3.1 Translation requests have come from a wide selection of languages, during 2012 / 2013 we can see language line translations have increased in Arabic, Czech, French, Russian, Slovak and Polish.
- 3.3.2 During 2012 we recruited a Volunteer Polish interpreter who has provides a face to face translation service to our residents.
- 3.4 **Age**
Year on year we can see a reduction in properties let to the over 75's.
In 2012 / 2013 we can see a steady increase in lead tenants in the age ranges 45 – 54 and 55 – 64.
- 3.5 **Lettings / Allocations**
In 2012 /13 we can see an increase in Non ME applicants on the Housing Register to 69%.

- 3.5.1 ME applicants account for 23% of the Housing Register, with 8% having no ethnicity stated.
- 3.5.2 The Census Data 2011 told us that 75% of Derby Residents are non ME and 25% of Derby Residents are ME.
- 3.5.3 Applicants can make up to 3 bids on advertised properties each week. Auto bidding occurs when the most vulnerable applicants on the register have automatic bids placed for them by the HomeFinder system. These bids will be automatically placed by the system where the property fits the circumstances and needs of the applicant.
- 3.6 ASB
A needs assessment is undertaken on all ASB cases at the onset of the complaint, this forms part of the action plan for dealing with the allegation and takes into account the individual needs of each case. Action plans are reviewed regularly by the officers concerned and adjusted accordingly as support needs change. In 2012/13 we carried out 4 evictions for antisocial behaviour.
- 3.7 Arrears
In 2012/13 we carried out 60 evictions for rent arrears, the equality breakdown is included in the Equalities end of year report Appendix 1.
- 3.8 Welfare Reform
The main impact of the under occupation charge, UOC, is focussed on the socio-economically less affluent. It is not a surcharge on the gross rent but a reduction in the amount of housing benefit payable.
- 3.8.1 As housing benefit is accessed on a means-test, the 'bedroom tax' results in claimants being taken below the state's own gauge of the poverty line. The main oil-and-water distinction is age, as individuals over Pension Credit Qualifying Age (PCQA) are exempt.
- 3.8.2 The rules vary for couples who straddle the age boundary. All single claimants below PCQA are caught by it (with short term protection for recently bereaved and formerly employed who could afford their rent).
- 3.8.3 There are no exemptions based on age or caring responsibilities or length of residence. Some mitigation is however available via a limited fund of discretionary payments with the local authority deciding which circumstances are most deserving of support.
- 3.8.4 The Government's policy position is that the UOC will result in more efficient use of the public housing stock and reduced housing benefit expenditure, predicting that those affected will find work or downsize. The size profile of the housing stock in many council areas means there are insufficient smaller properties for tenants to relocate to.

4. EQUALITIES IMPACT ASSESSMENT

The following Equality Impact assessments have been carried out in 2012/2013:

- Value For Money Strategy
- Risk management Strategy

- London Road Joinery Shop
- Move to the Council House

The areas listed below have no implications directly arising from this report:

Consultation
 Financial and Business Plan
 Legal and Confidentiality
 Council
 Personnel
 Environmental
 Equalities Impact Assessment
 Health & Safety
 Risk
 Policy Review

If Board Members or others would like to discuss this report ahead of the meeting please contact:

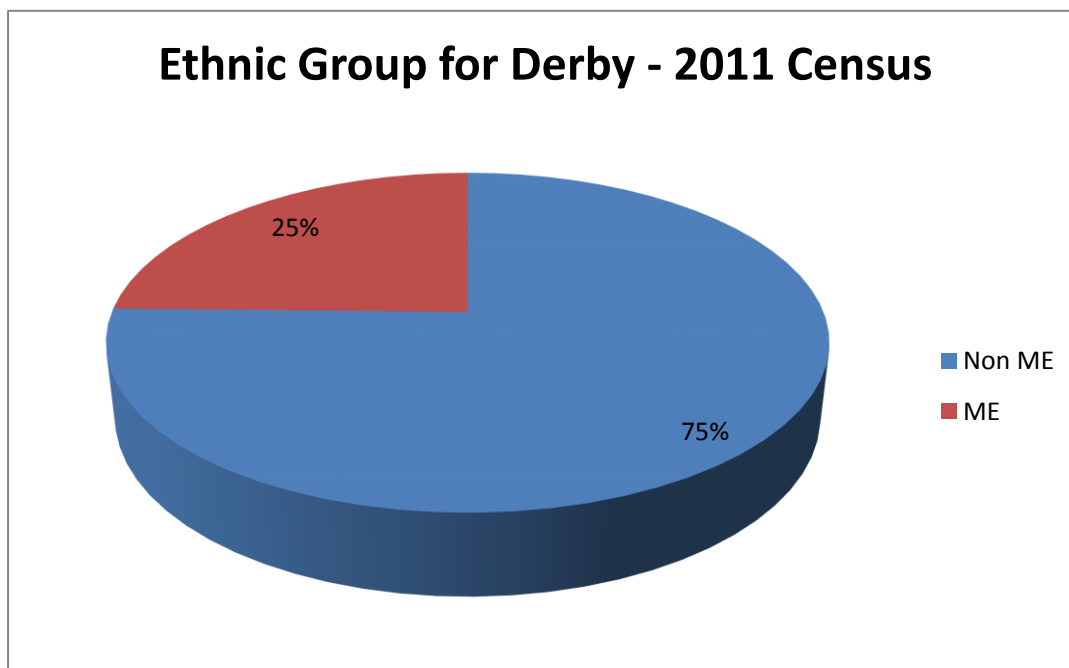
Author: Annabelle Barwick / Change Manager / 01332 8888402 /
 annabelle.barwick@derbyhomes.org

Background Information: Insert details of any unpublished documents used to prepare your
 report

Supporting Information: Insert details of any previous reports to Board or Committee

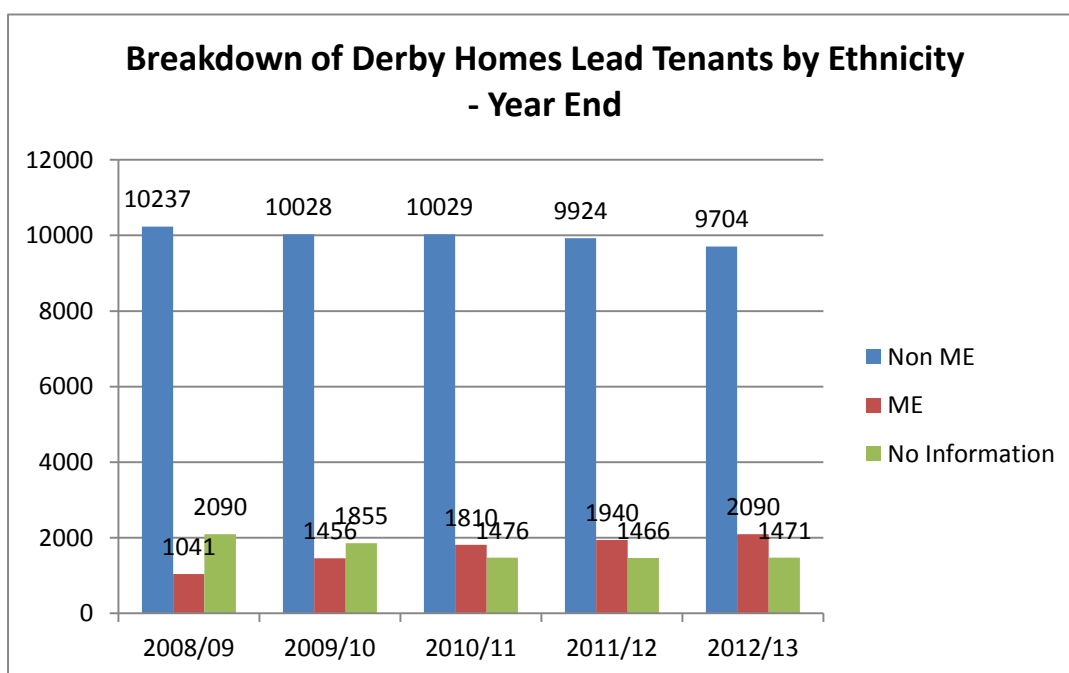
This page has been left intentionally blank

Equalities End of Year Report 2012/13



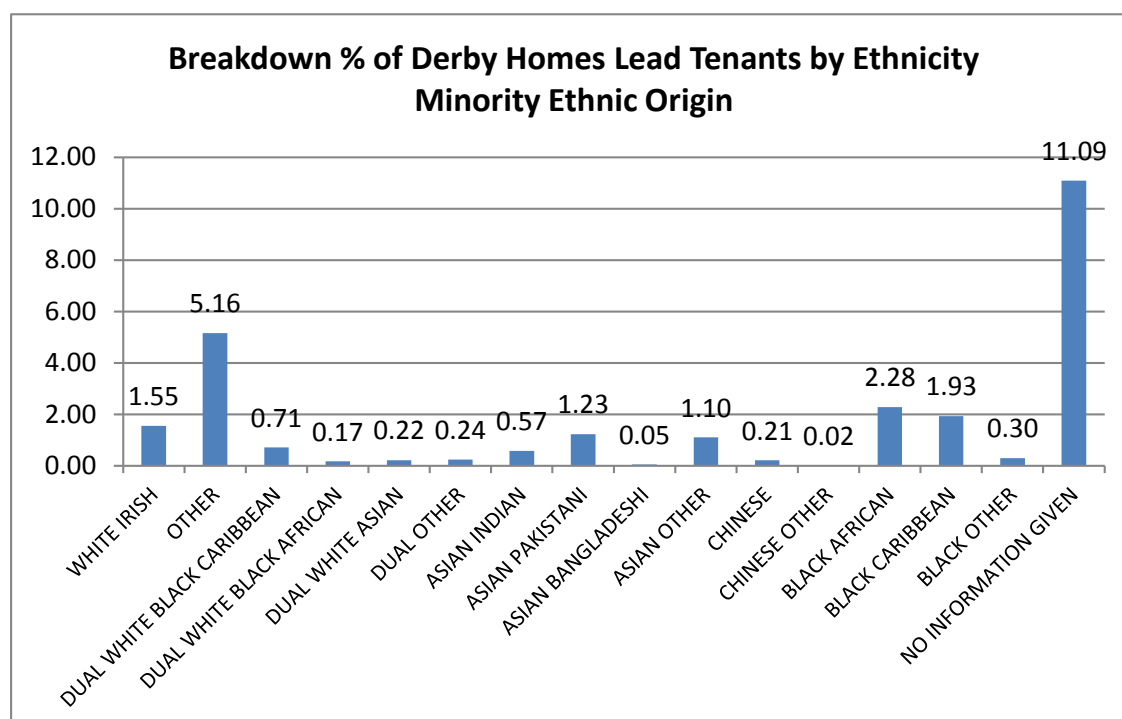
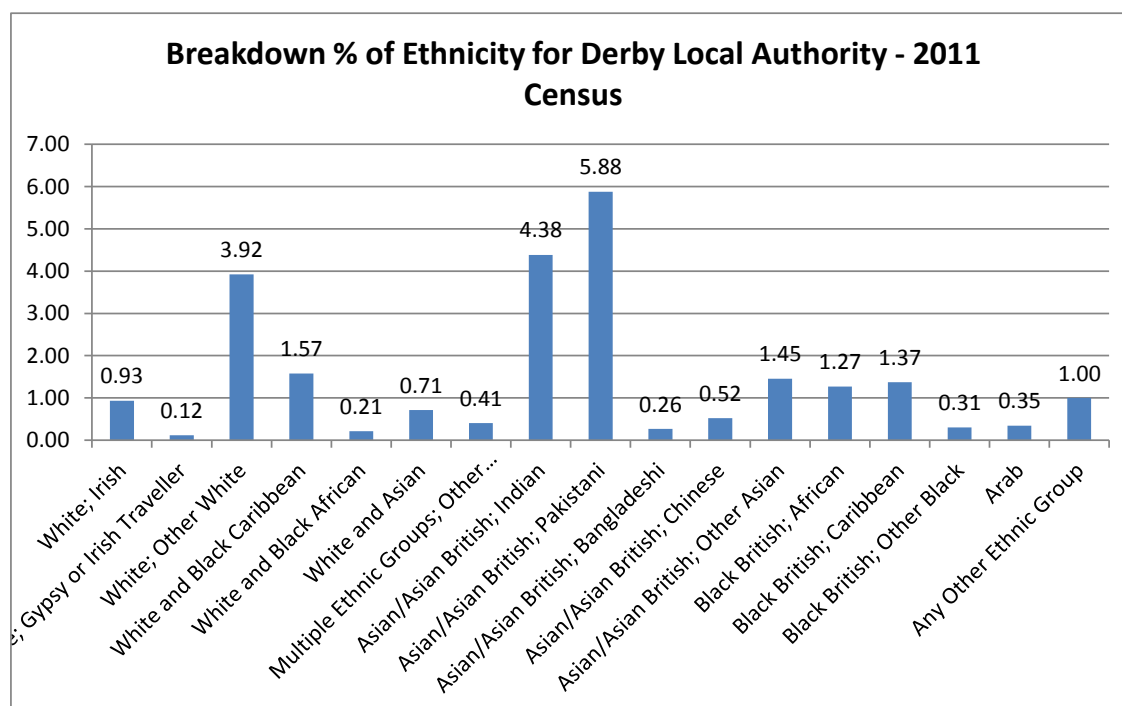
Information taken from the Office of National Statistics – Census 2011

Copyright Please note that the Local Profiles contain data and information derived from the Office for National Statistics (ONS), and government department sources which are protected by Crown copyright.



Information from the census has provided a current resident profile of Derby 75% non minority ethnic and 25% minority ethnic. Derby Homes profile is 73% non minority ethnic residents, 16% minority ethnic residents and 11% of our residents have not declared their ethnicity.

During 2013 Derby Homes Non ME lead tenants have reduced by 1.65% and ME lead tenants have increased by 1.15%

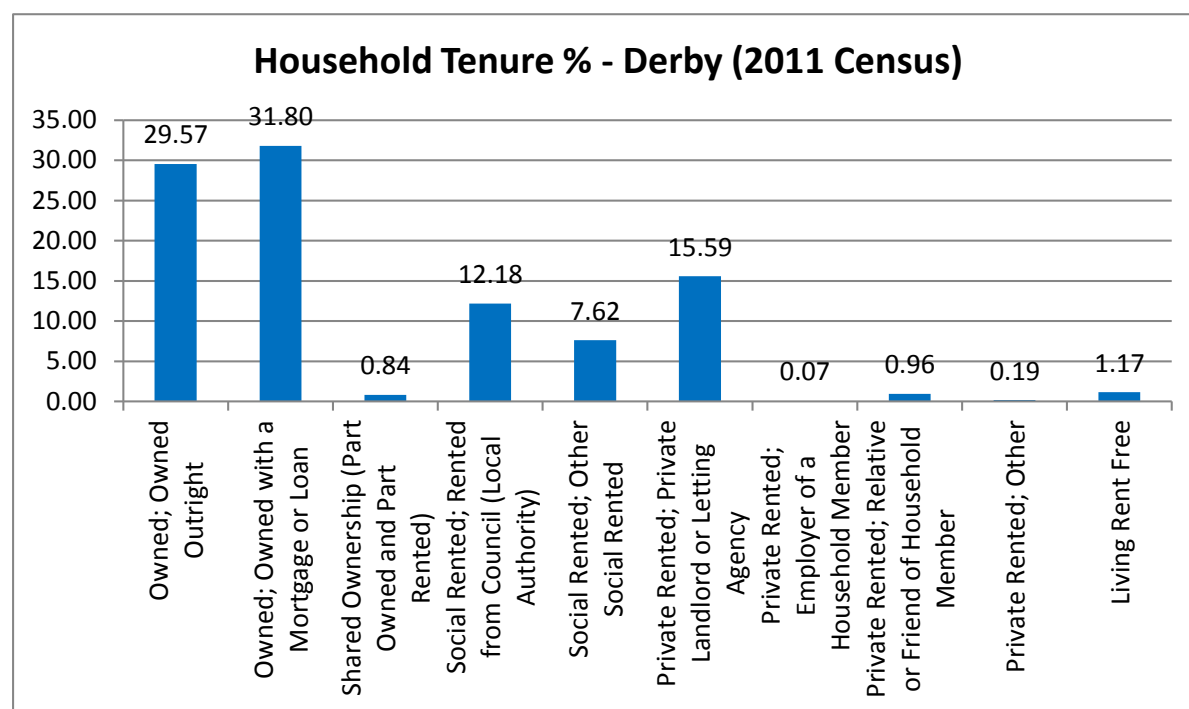


Information taken from the Office of National Statistics – Census 2011

179,291 residents were aged between 16 and 74. Of these 112,422 were in employment and 66,869 were not in employment. 16,900 of these have never worked.

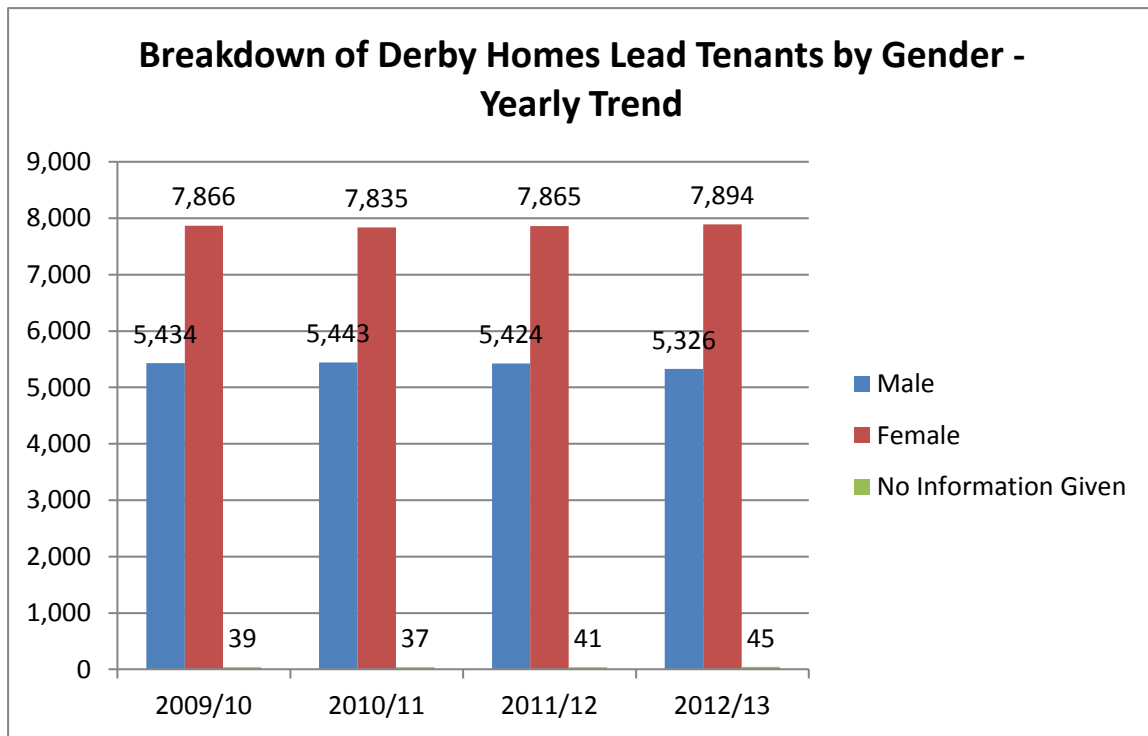
Percentage of people of working age claiming a key benefit (as a proportion of the working age population) – 17% as opposed to 15% for both the East Midlands and England.

Percentage of people claiming Jobseeker's Allowance (as a proportion of the working age population). – 5% as opposed to 3% for the East Midlands and 4% for England.

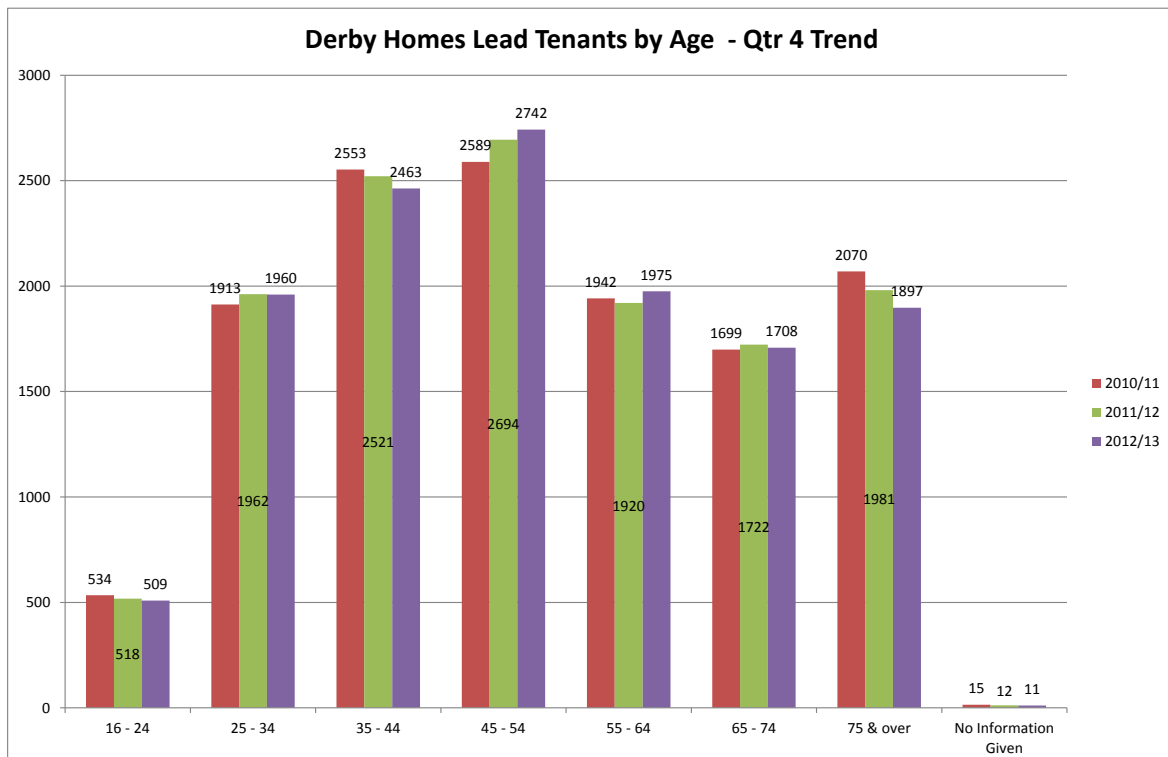


The 2011 Census asked people to describe their general health over the preceding 12 months as 'very good', 'good', 'fair', 'bad', or 'very bad'.

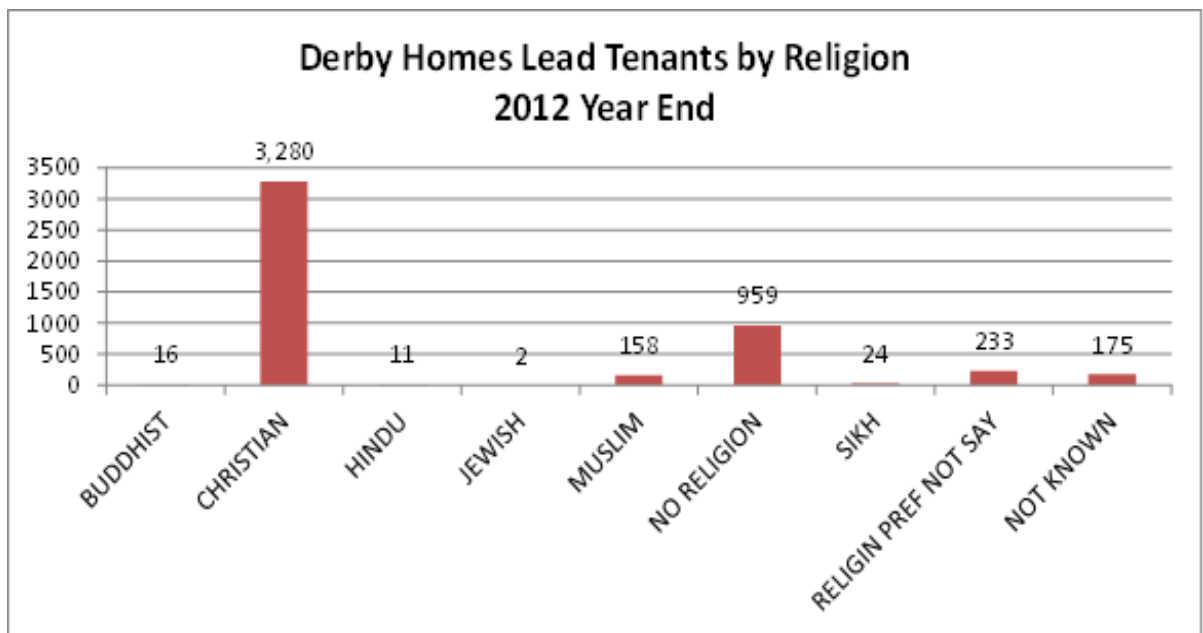
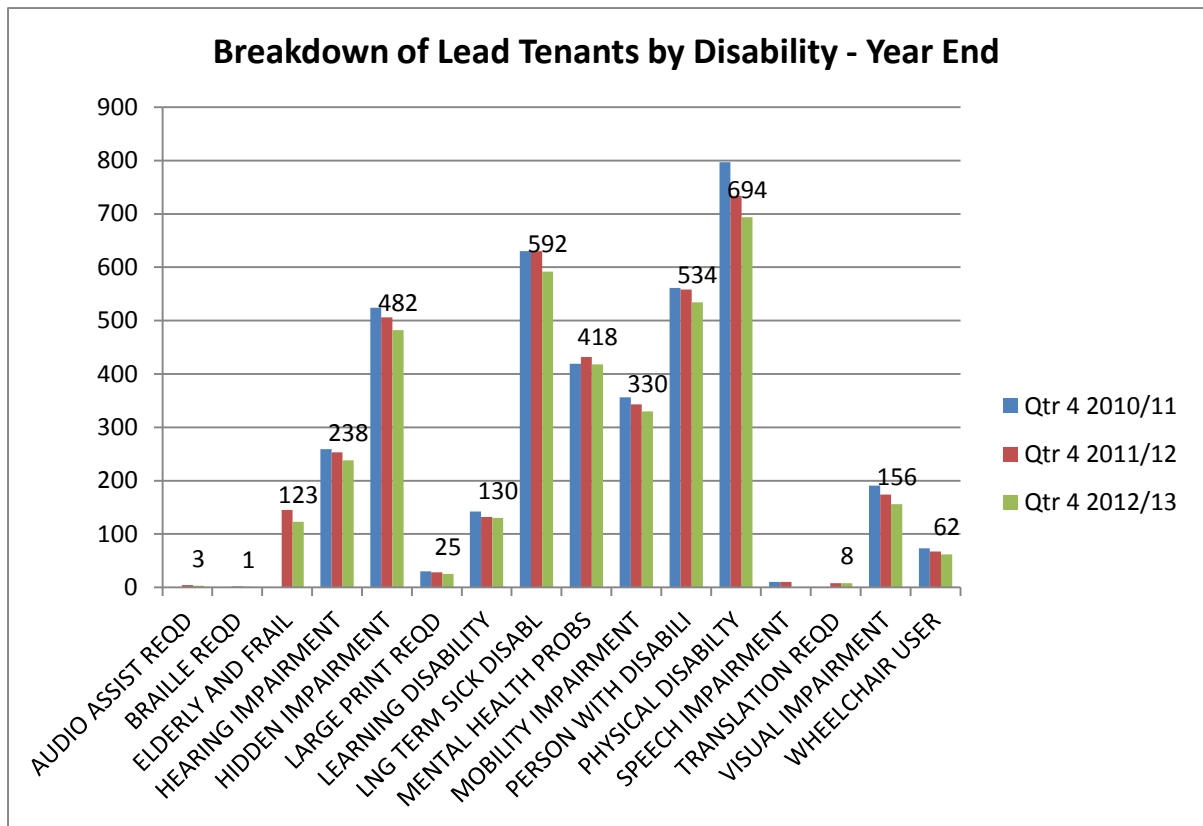
| Variable | Derby % | England % |
|-----------|---------|-----------|
| Very good | 45.0 | 47.2 |
| Good | 35.0 | 34.2 |
| Fair | 14.1 | 13.1 |
| Bad | 4.6 | 4.2 |
| Very bad | 1.3 | 1.2 |



During 2012 / 2013 there was a reduction in Derby Homes tenancies of 65 lead tenancies/ properties. The gender split remains unchanged during 2012 /13

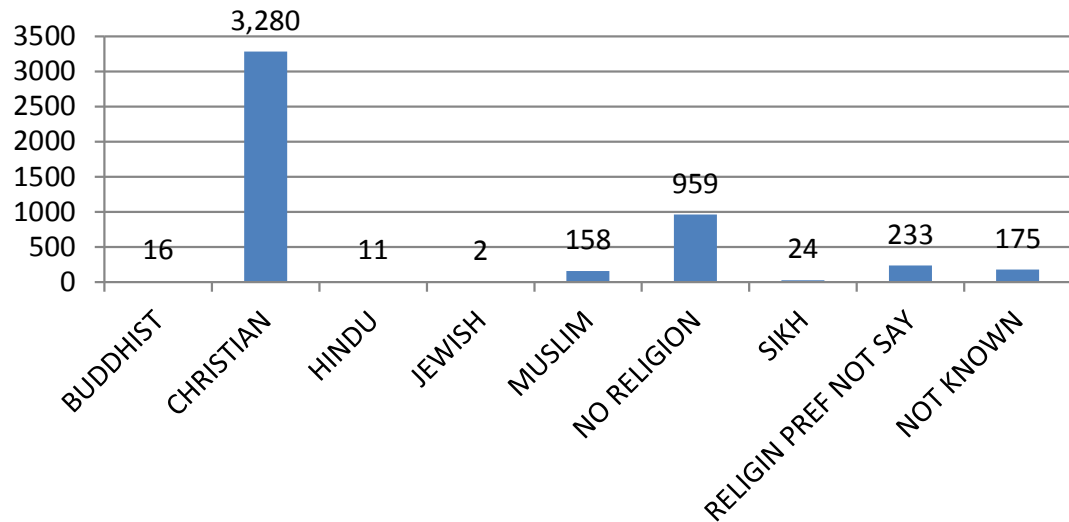


Year on year we can see a reduction in properties let to the over 75's. In 2012 / 2013 we can see a steady increase in lead tenants in the age ranges 45 – 54 and 55 – 64.

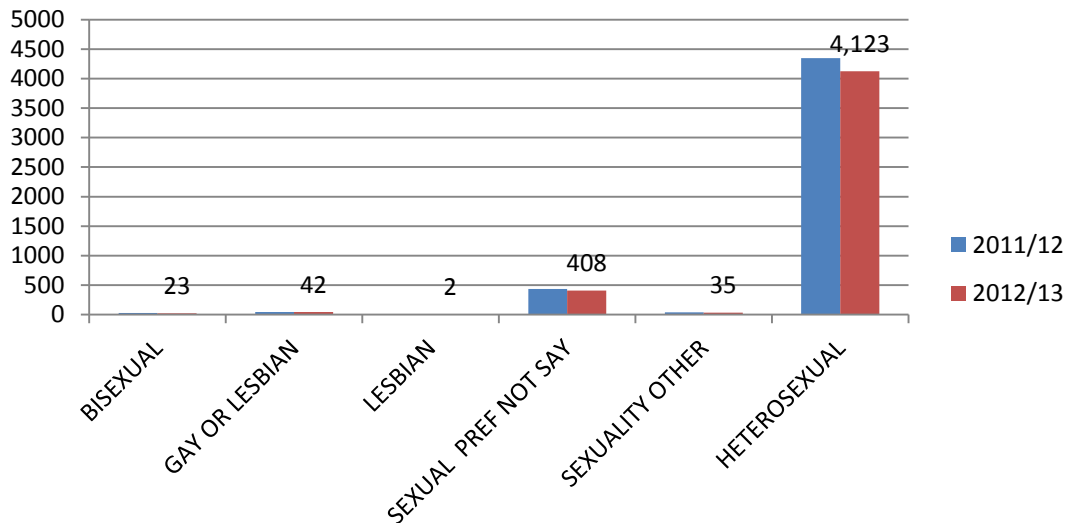


Last year we held 35.55% information on religion year we hold 36.62%.

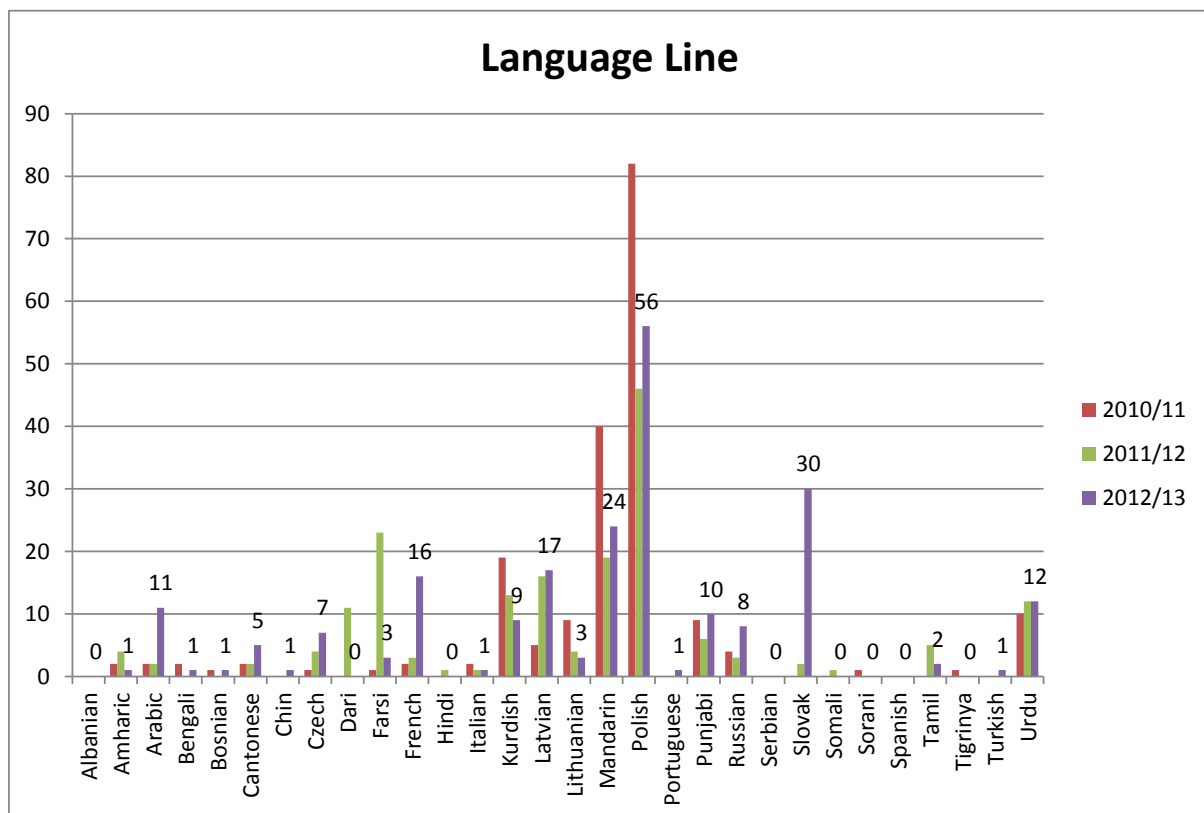
**Derby Homes Lead Tenants by Religion - Year End
2012/13**



**Derby Homes Lead Tenants by Sexual Pref
Year End**



Service Delivery



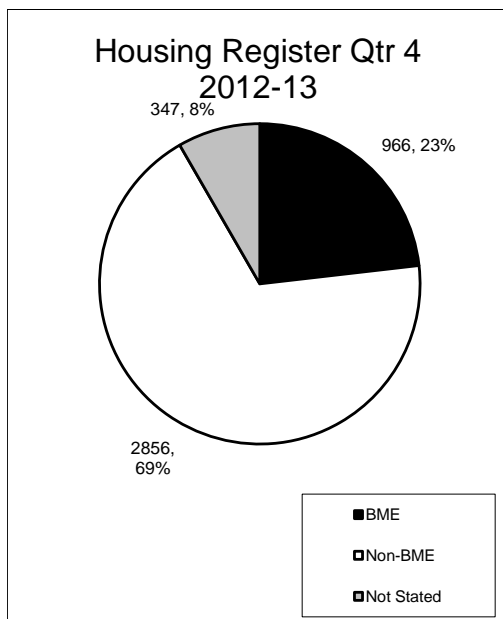
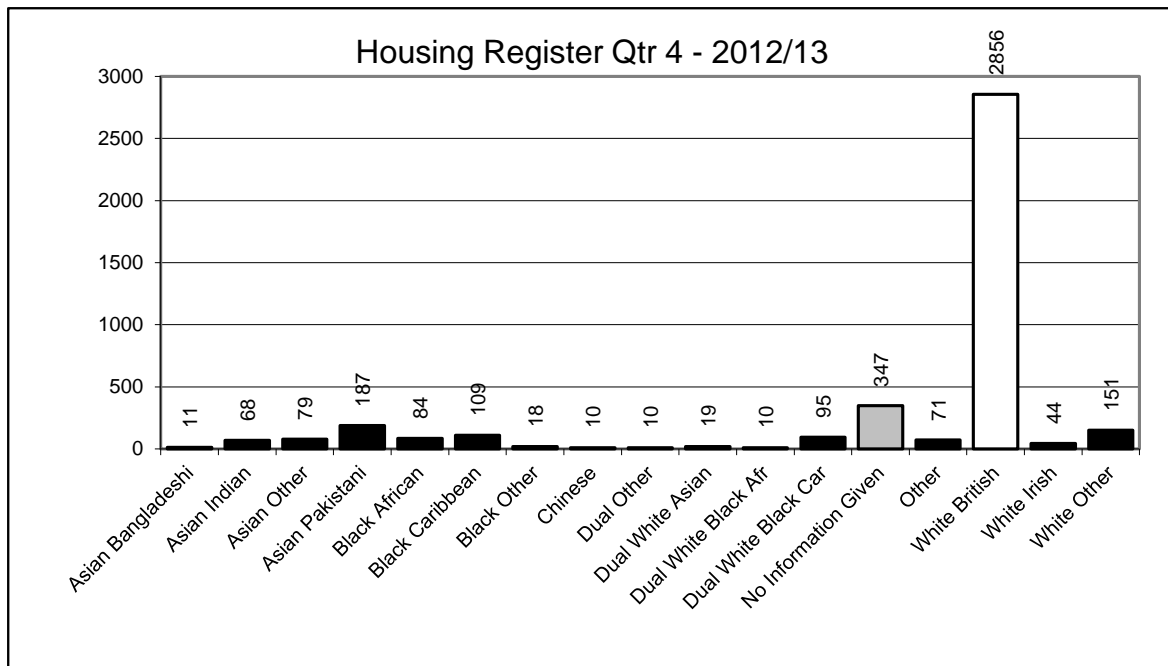
During 2012 / 2013 we can see language line translations have increased in the following languages

Arabic
Czech
French
Russian
Slovak

We can also see an increase in calls for Polish translations, on top of these recorded through Language line, we also have a Volunteer Polish interpreter who has provided a service to our residents this year

Bids & Lettings

As at 17/04/13

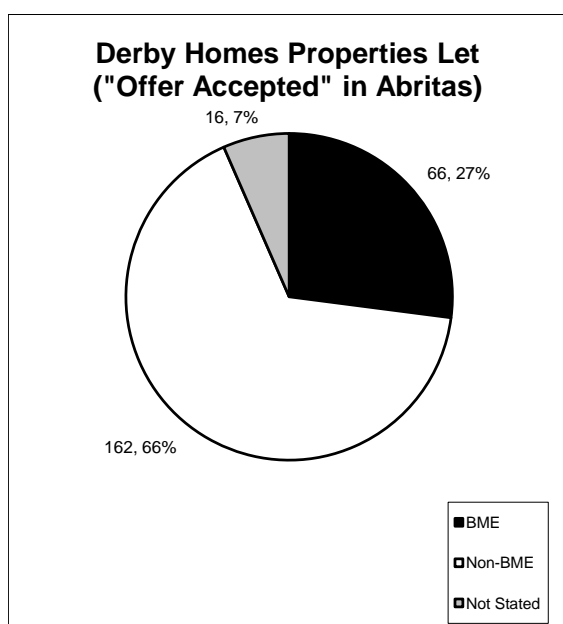
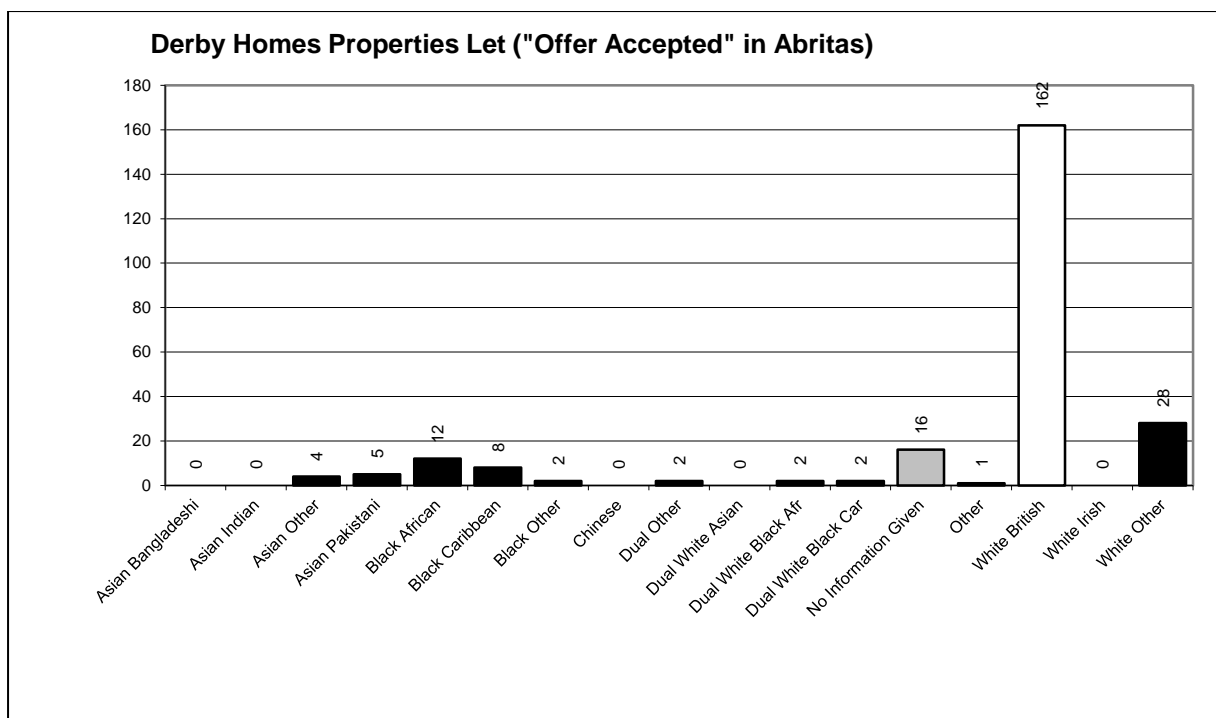


| Ethnicity | 2011/12 | 2012/13 |
|------------|---------|---------|
| Non ME | 65% | 69% |
| ME | 26% | 23% |
| Not Stated | 9% | 8% |

In 2012 /13 we can see an increase in Non ME applicants on the Housing Register to 69%.

ME applicants account for 23% of the Housing Register, with 8% having no ethnicity stated.

The Census Data 2011 told us that 75% of Derby Residents are non ME and 25% of Derby Residents are ME



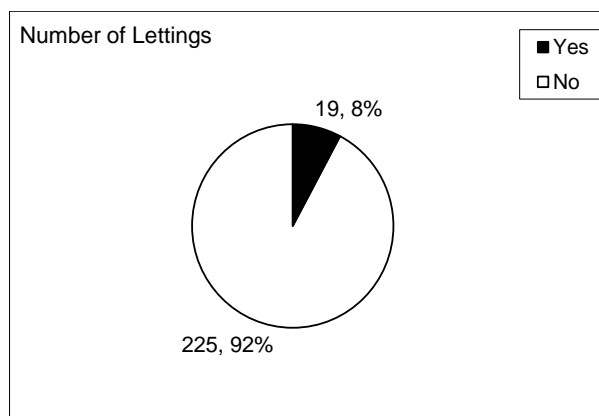
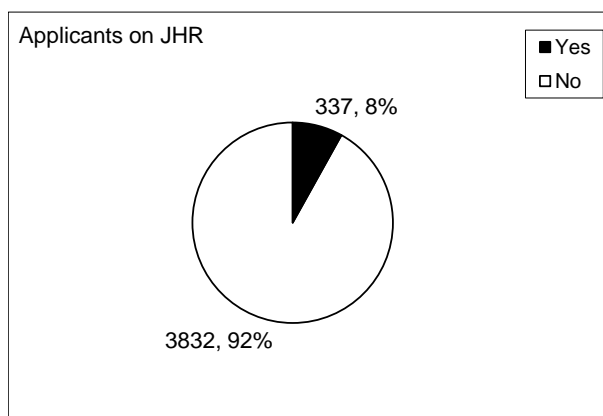
| Ethnicity | 2011/12 | 2012/13 |
|------------|---------|---------|
| Non ME | 60.5% | 66% |
| ME | 31.5% | 27% |
| Not Stated | 8% | 7% |

In 2012 /13 we can see an increase in properties let to Non ME lead tenants from 60.5 % to 66%.

Non ME applicants account for 69% of the Housing Register.

The Census Data 2011 told us that 75% of Derby Residents are non ME and 25% of Derby Residents are ME

Applicants with an Adaptation or Mobility requirement – Quarter Four 2012/13

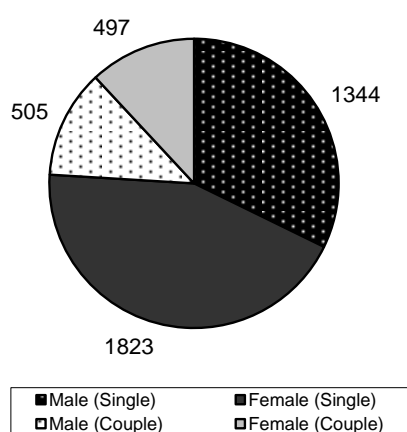


In Quarter 4 2011/12, 6% of applicants on the Joint Housing Register had an adaptation or mobility requirement compared to 8% at Quarter 4 2012/13. 11% of the properties let in quarter four 2011/12 were to applicants with an adaptation or mobility requirement compared to 8% in quarter four 2012/13.

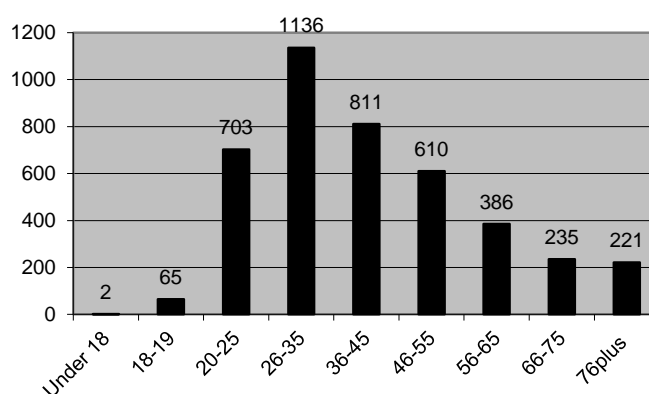
Gender and Age of Lead Applicant – Quarter Four 2012/13

| | JHR | | Lettings | |
|-----------------|---------|---------|----------|---------|
| JHR | 2011/12 | 2012/13 | 2011/12 | 2012/13 |
| Male (Single) | 29% | 32% | 30% | 23% |
| Male (Couple) | 13% | 12% | 15% | 14% |
| Female (Single) | 46% | 44% | 42% | 48% |
| Female (Couple) | 12% | 12% | 13% | 15% |

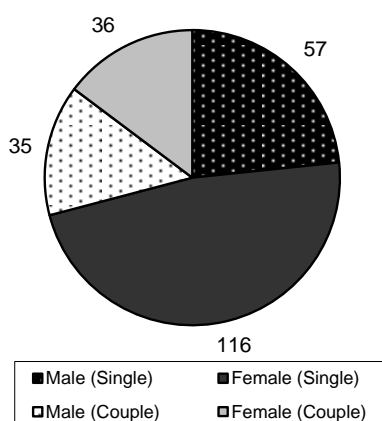
JHR



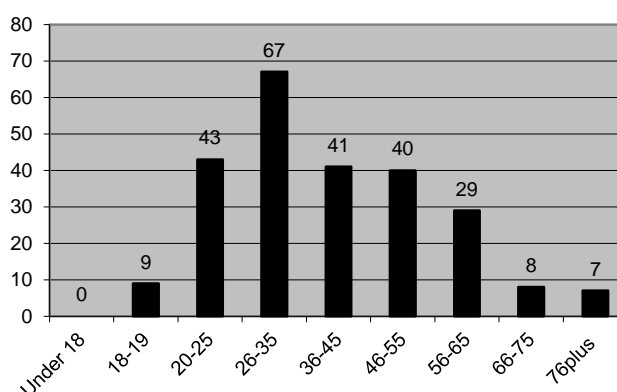
Age of lead Applicant



Lettings



Age of lead Applicant

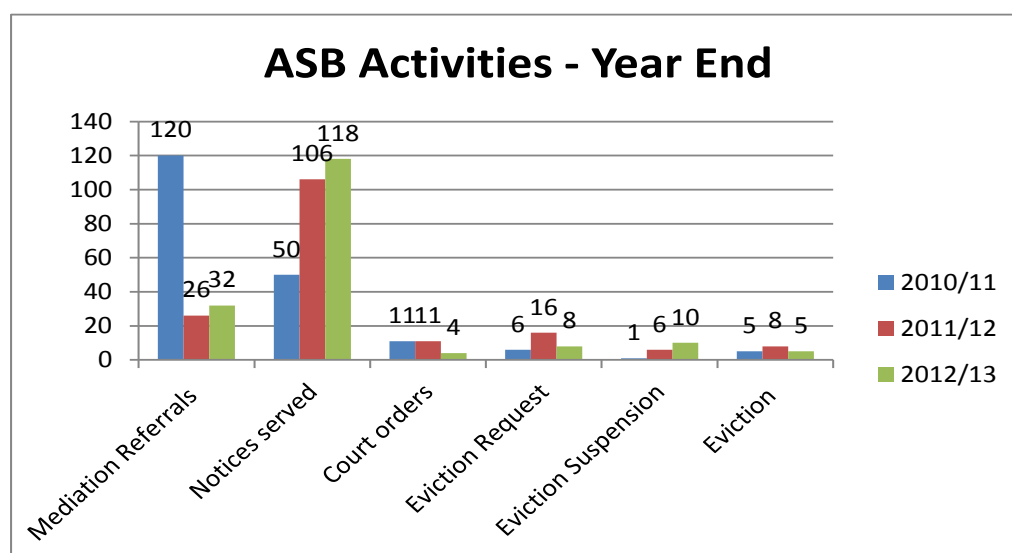


Arrears

Equalities breakdown of Arrears Evictions carried out

| Ethnicity | Gender | Age | Disability |
|--|--------------------------|--|-----------------------------------|
| 2011/12 | | | |
| 26 x Non ME 11 x ME 5 x No Information Given | 23 x Male 19 x Female | 16-24 = 6 25-34 = 15 35-44 = 10 45-55 = 9 55-64 = 2 | 39 x Non-Disabled 3 x Disabled |
| 2012/13 | | | |
| 38 x Non ME 22 x ME | 30 x Male 30 x Female | 16-24 = 4 25-34 = 18 35-44 = 13 45-55 = 20 55-64 = 5 | 59 x Non-Disabled 1 x Disabled |

Anti-Social Behaviour



Equalities breakdown of ASB Evictions carried out

| Ethnicity | Gender | Age | Disability | Religion | Sexual Preference |
|---------------------------------------|------------------------|--|--|--------------------------------|-----------------------------------|
| 2011/12 | | | | | |
| 6 x Non ME 1 x ME 1 x Not known | 8 x Female | 16-24 = 2 25-34 = 2 35-44 = 2 45-55 = 2 | 1 x No Disability 4 x Disability 3 x Not known | 1 x Christian 7 x Not known | 4 x Heterosexual 4 x Not known |
| 2012/13 | | | | | |
| 4 x Non ME 1 x ME | 4 x Male 1 x Female | 16-24 = 1 25-34 = 1 35-44 = 2 45-55 = 1 | 1 x Disability 4 x Not known | 5 x Not known | 2 x Heterosexual 3 x Not known |

This page has been left intentionally blank